



Service & Support for Peace of Mind

- * Programming, installation supervision, equipment and application training are included with the support package
- * Single source for parts and service
- * Complete customization
- * Legendary service, support, and professional engineering expertise. Romeo Engineering instructors regularly conduct full service customer training programs on waterjet cutting machines, software, part programming, diagnostics, troubleshooting, and a host of other topics relevant to efficient operation of the system
- * Affiliate Program. Call to learn how our vast network of fabricators and metal service centers to save you money on raw materials, custom control enclosures, reverse engineering, and other services!

Call our dedicated sales representatives or visit our website

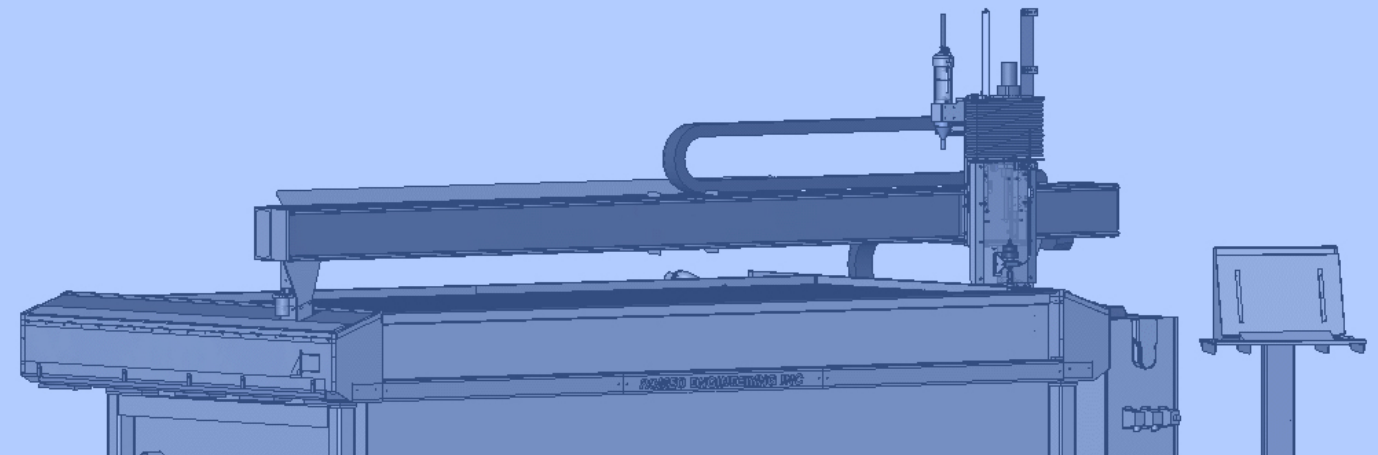
Fast friendly customer service for ordering parts and accessories. Customer and technical service hotline is available 24-hours a day 365-days a year



ROMEO ENGINEERING INC
 4217 Hahn Blvd.
 Fort Worth, TX 76117 USA
 Tel (817) 656-0048
 Fax (817) 581-9332
 www.romeoeng.com
 romeoeng@romeoeng.com

Copyright 2009 Specifications subject to change without notice.

High Quality CNC Waterjet Cutters



ROMEO ENGINEERING INC
 Mfg. of CNC Waterjet | Aerospace | Automation

4217 Hahn Blvd.
 Ft. Worth, TX 76117
 Tel 817-656-0048 Fax 817-581-9332
 www.romeoeng.com
 romeoeng@romeoeng.com

About Romeo Engineering Inc

I would like to take a few minutes of your time to introduce Romeo Engineering, Inc. Our company was founded in 1987 and built on a solid foundation of personal experience in automation design and manufacturing. Romeo Engineering has 5 different product divisions:

- CNC Systems** – Manufactures of high-pressure waterjet, plasma, ultrasonic router tools
- Aerospace** – Manufactures assembly lines for helicopter blades & composites
- Energetics** – Manufactures assembly lines for ordnance, rocket motors, de-mil, chemical
- Automation** – Full-factory automation for automotive, textiles, & electronics
- Food Processing** – Manufactures assembly lines for food production

Romeo Engineering Inc. is a Texas Certified Professional Engineering company, registration #F-001567. Our experience includes building some of the most technologically sophisticated equipment in America. We have designed and built automated assembly and metal working systems for IBM, GE Aircraft Engines, Ford, LouverDrape, Tandy, Abbott Diagnostics Laboratories, Lawrence Livermore National Laboratories, Mason & Hanger Pantex Division, Indian Head Naval Surface Weapons Research Center, most Department of Defense Depots and many other Fortune 500 Customers. The projects included products as diverse as automated assembly lines for printers, typewriters, personal computers, washing machines, medical products, printed circuit boards, window coverings, explosive projectiles, detonators and automotive air bags. Our water jet systems have fabricated exotic metals, composites, fiber glass doors, aluminum satellite dishes, air bag propellant, rubber, glass, nuclear material. We pioneered the use of computers and robotics in assembly automation, and through those efforts have developed generic techniques and components that can be applied to new system designs. By applying these solutions to your assembly systems, we can deliver much greater value while lowering the risk of new automation design. That means lower cost and higher productivity.

Applying our robotics expertise to a new technology we designed a broad range of ultra-high pressure water and abrasive/water cutting equipment. This equipment integrates Water Jet intensifiers into our special designed machinery, tailoring this newest cutting technology to your needs. We can provide custom designed programming tools to assist you in your part programming or provide part programming on a contract basis. We also offer a series of precision cutting systems that make Water-Jet technology available in a low cost, easy to use machine-tool package.

Romeo Engineering Inc was founded to conceive and build the highest quality automation available in America. We can provide automation consulting, engineering and turnkey systems. Our manufacturing operations utilize the latest in CNC and conventional machine tools. Our engineering is CAD based for precision design and to permit us to further cut our customer's cost by reuse of proven designs. In 1991 our company acquired a modern 22,000 square foot building to increase our engineering and manufacturing capabilities. In 2007, we added a second larger facility to give us the ability to build even larger assembly lines. We are conveniently located near D/FW airport and are ready to serve you now. For further information please feel free to call us at (817) 656-0048 or FAX 817-581-9332.

ROMEO ENGINEERING INC

Take your production even further with industrial automation by
ROMEO ENGINEERING INC



ROMEO ENGINEERING INC systems are setting new highs in efficiency and cost savings.

Romeo Engineering Inc is dedicated to developing state of the art waterjet cutting machinery. Applying our automation expertise to waterjet technology, we also offer a broad range of production level "definite-purpose" ultra-high pressure water and abrasive/water cutting equipment. Unlike conventional X-Y robots, these machines are specifically designed for higher speed and harsher environments. We have models for ceramic tile production, extrusions, explosion-proof, lathes, food processing, demilitarization, textiles, and automotive just to name a few!



60,000 PSI



Extremely Versatile Technology



◀ **Platinum Series**
Popular Sizes
14x14 ~ 20x20 foot



◀ **Massive Brushless Motors on All Models**
Direct Coupled Design on Precision Ground Bases



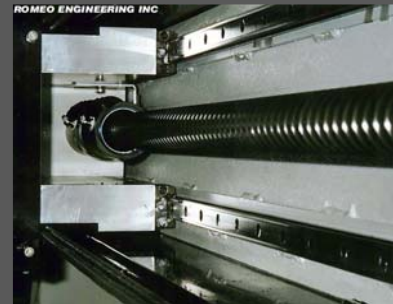
◀ **Digital Abrasive Control**
Patented By Romeo Engineering



◀ **Abrasive Hopper Option**
+ 1 or more abrasive hoppers
+ 600 or 2500 lb capacity
+ Load-under- pressure option



◀ **Gold Series**
Popular Sizes
4x4 ~ 12x12 foot



◀ **Heavy Duty Ballscrew Drives**
Platinum, Gold, or Silver Series



Waterjet Pumps
◀ **Accustream® AS-6030**
+ Lowest cost pump
+ Cut up to 2" with a single nozzle



◀ **Drill Option**
+ Fully enclosed
+ Pneumatic for starting laminations
+ Up to 5 HP for serious drilling



◀ **Chrome Series**
Multi-Nozzle Dynamic Centerline



◀ **Heavy Duty Rack & Pinion Drives**
Chrome & Bronze Series



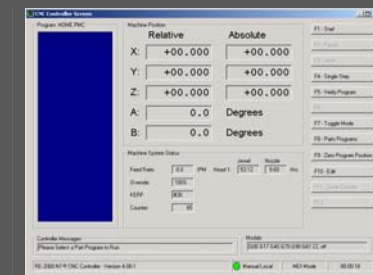
◀ **Accustream® AS-60100**
+ 50,75,100,150 HP
+ Cut up to 10" with one nozzle, or thinner with more nozzles



◀ **Automated Tank Cleaner Option**



◀ **Silver Series**
Popular Sizes
4x4, 5x10, 6x12 foot



◀ **Open CNC Controls**
No proprietary ORD files / CAM formats



◀ **KMT® Basic Series S-30**



◀ **Closed Loop Zero Discharge Option**



◀ **Silver Series**



◀ **High Resolution Vision Systems**
AutoMat II™ Version Shown (Patents Pending)



◀ **KMT® Streamline Series**
50,75,100,150 HP



◀ **Low Cost Reverse Engineering Option**



◀ **Bronze Series**
Shown With Optional Conveyor



◀ **Pendant & Air Conditioner**
Included on every machine



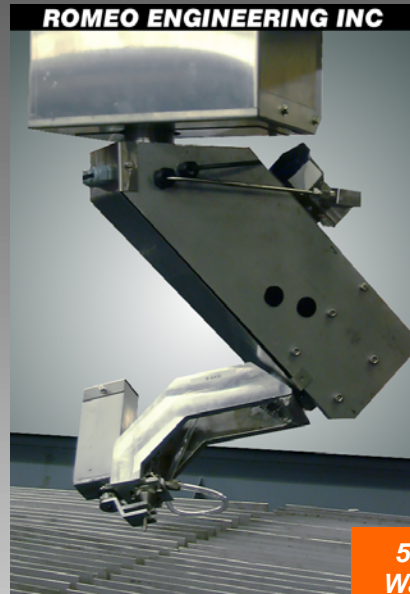
◀ **High Pressure Manifolds**



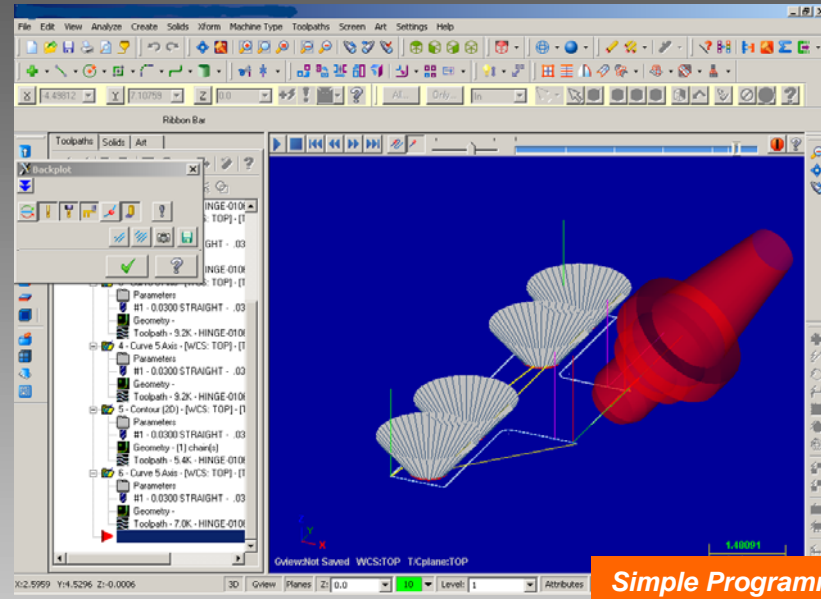
◀ **Explosion Proof Option**
Shown With Optional Rotation Axis

Looking for something different? Go 3D!

Consider our rock solid **5-axis CNC Waterjet!** It will cut fluid 3D shapes straight from your IGES or native CAD format. Unlike any other technology, waterjets cut very thick sections (10+inches) from virtually any material. Our elegant design greatly simplifies programming and alignment between nozzle changes. The nozzle mount is far more accurate than competitive designs. Integrated height sensor and full 400-degree rotator/nutator axes.



5-Axis Waterjet



Simple Programming Even for Complex Geometry

Need to scale up production?

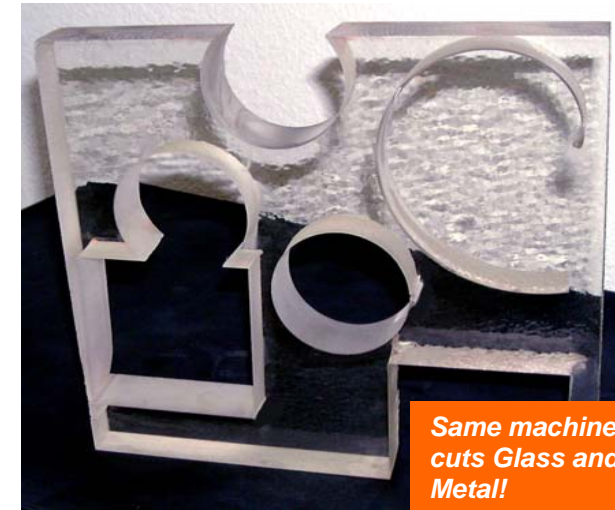
1-pump running 2-machines, or 2-machines on 1-pump. We have options for every situation and budget! Waterjets allow you to amortize your investment and increase throughput easily.



Multi-Nozzle Option



Many Nozzles Brand Options



Same machine cuts Glass and Metal!

The role of the traditional machine shop is changing. Romeo Engineering Inc offers many models of waterjet cutters for both metal and non-metals. It allows a unique opportunity to take on a broader range of projects. Being a non-contact technology, the type of material does not matter. With large pumps, it is possible to cut up to 10 inch thick of virtually any known material. The diversity of the abrasive waterjet enables you to expand into new markets such as oilfield, military, automotive, packaging, architectural, aircraft, gaskets, food, and furniture. Our 5-axis models, allow you to break out of the 2D market and start making fluid 3D shape parts. Unlike any other technology, the waterjet gives your business more ways to make money.

Abrasive applications.

Stainless, aluminum, ceramic, fiberglass, glass, natural stone, and ceramic plates. Easily cuts tough materials like Inconel, titanium, and graphite.

Straight water applications.

Roof shingles, paper, cardboard, plastic film, ABS, PVC, rubber, foam rubber, sheet rock, cellular material, insulation materials, textiles, leather, food, explosives.



Typical Waterjet Installation

Waterjet 101 The 1st Course in Efficiency

The waterjet gives superior product quality start to finish. The CNC Abrasive Waterjet does the work of multiple machine tools. Fabricators realize huge cost savings by blanking parts from larger sheet and plate stock. The waterjet's omni-directional cutting and ability to pierce tiny holes lets you trim extremely tight corners and radii, even in slabs of laminated glass or paper-thin leaded glass. Only waterjet cutting offers low lateral and vertical cutting forces and low mechanical vibration.

Features

- * No special fixturing is required other than small weights. Parts can be nested for maximum material utilization taking advantage of the stream's kerf – as low as .005" for plain water or .030" for abrasive cutting. Polishing time is reduced by better cleaner edge.

- * Non-contact so no dulling or contamination of nozzle.

- * Unlimited variety of materials can be cut with exceptional edge quality

- * Extremely high speed cutting through soft materials.

- * Cut a wide range of materials of varying thickness on a single machine. Can cut reflective and non-reflective materials.

- * Thickness range up to 10 inches.

- * Stacking sheets of material decreases material handling time and decreases NET cost.

- * Lower maintenance than a laser and repair time is quicker.

- * Unlike plasma, it can cut over gaps without damage.

- * Cold-cutting tool protects against metallurgical damage. No heat affected zone, heat induced warpage, granular change, fumes or smoke like with laser or plasma.

- * No oxide or carbon residue that can cause adhesion problems with plating and powder coating. Saves time and money previously spent on secondary finishing operations.

- * Adaptable to wide variety of other automation including webs, extrusions, cleaning, stripping, and de-flash.